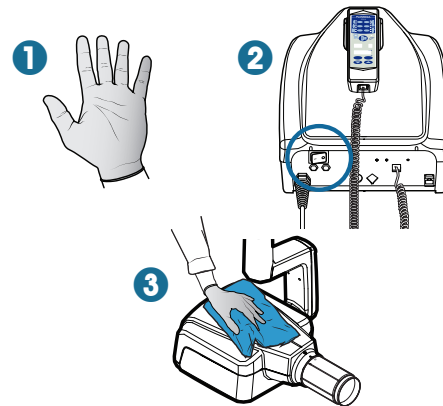


Maintenance guide

Planmeca ProX™ intraoral X-ray unit

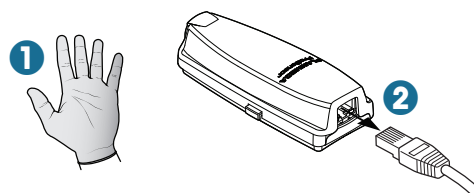
Surfaces

- 1 Wear protective gloves.
- 2 Switch off the X-ray unit before cleaning and disinfection.
- 3 Clean with a soft cloth dampened with a mild Planmeca approved cleaning solution.
- 4 For disinfection, stronger Planmeca approved agents can be used.



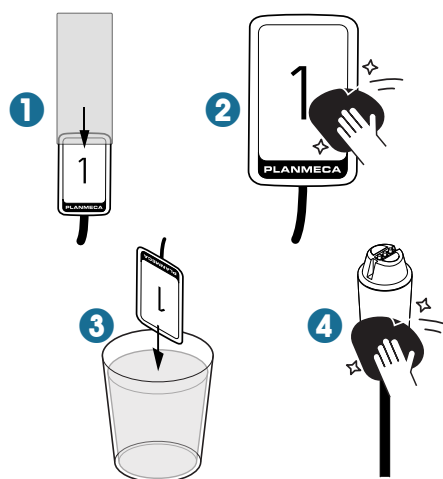
Planmeca ProSensor® HD intraoral sensor

- 1 Wear protective gloves.
- 2 Switch off the device before cleaning and disinfection.



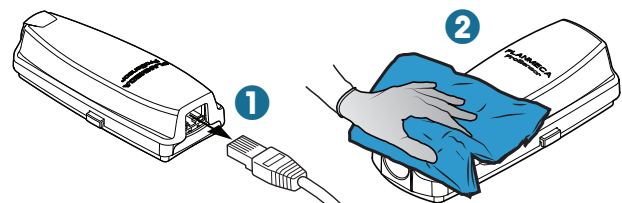
Sensor and cable

- 1 Use a new disposable hygienic sheath **every time you use a sensor.**
- 2 To disinfect the sensor, wipe its surface with a soft cloth dampened with a Planmeca approved disinfectant solution.
- 3 The sensor casing can also be immersed in Planmeca approved disinfectant solution.
- 4 The sensor connector can be cleaned using a soft cloth.
- 5 *Do not* leave the sensor in disinfectant overnight.
- 6 *Do not* soak the magnetic connector of the sensor cable.
- 7 *Do not* sterilise the sensor or cable in an autoclave or UV oven.



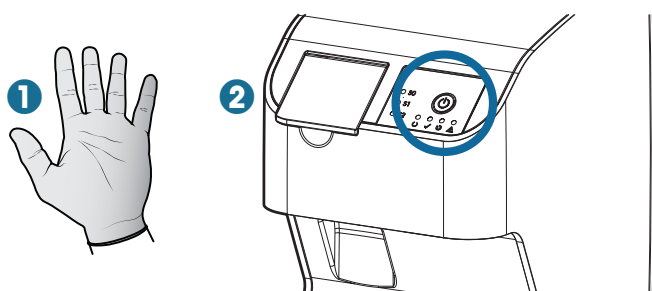
Sensor control box

- 1 Switch off the device before cleaning.
- 2 Clean with a soft cloth dampened with a mild Planmeca approved cleaning solution.
- 3 *Do not* disinfect.



Planmeca ProScanner® 2.0 imaging plate scanner

- 1 Wear protective gloves.
- 2 Switch off the device before cleaning and disinfection.



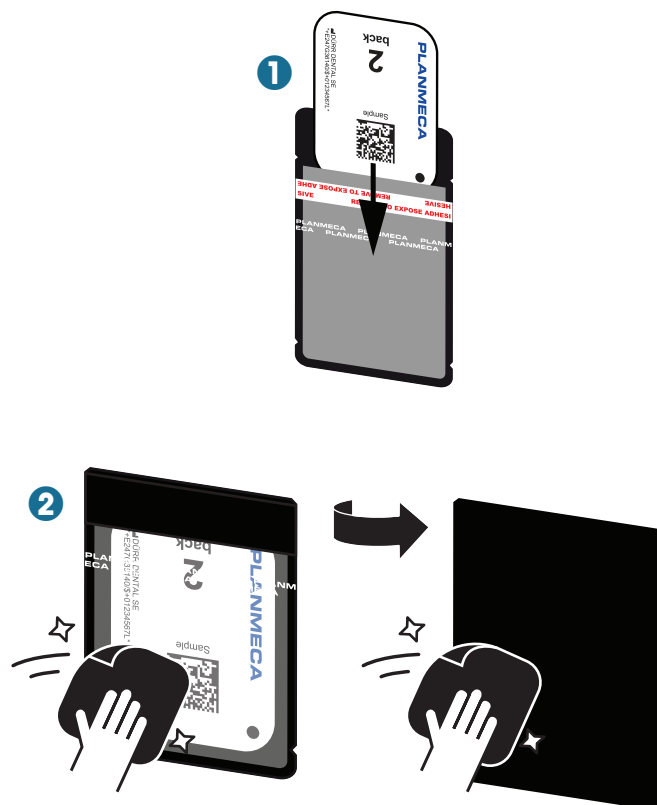
Imaging plate scanner

- 1 Clean and remove any soiling with a soft, lint-free cloth dampened with cold tap water.
- 2 Disinfect the surfaces with a Planmeca approved disinfection wipe, or use Planmeca approved disinfectant on a soft, lint-free cloth.
- 3 Make sure no liquids get inside the scanner, as they could damage it.
- 4 Do not spray.



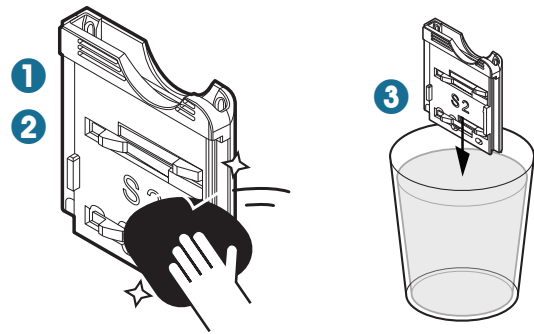
Imaging plates and light protection covers

- 1 Use a new disposable light protection cover for every use.
- 2 Disinfect light protection covers using Planmeca approved disinfectant before and after placement.
- 3 Allow to dry completely before using.
- 4 Do not steam sterilize – heat and humidity will damage imaging plates.
- 5 Do not immerse in disinfectant.
- 6 Cleaning and disinfectant wipes are unsuitable for cleaning.



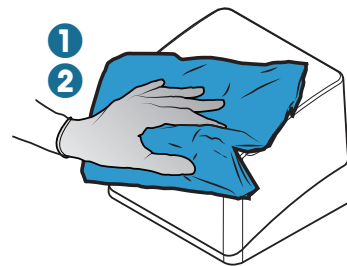
Cartridges

- 1 Remove any impurities with a soft, lint-free cloth that has been dampened with cold tap water.
- 2 Clean and disinfect with a Planmeca approved disinfectant wipe, or with a soft, lint-free cloth dampened with Planmeca approved disinfectant.
- 3 Alternatively, the cartridge can be immersed in Planmeca approved disinfectant.
- 4 Allow the cartridges to dry completely before using them.
- 5 *Do not* thermally disinfect or steam sterilise the cartridges, as heat will damage them.



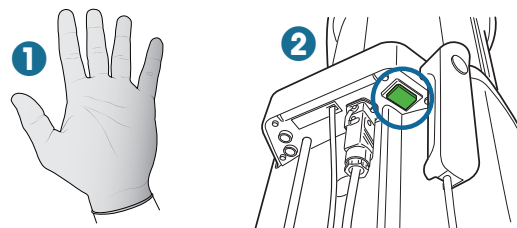
Imaging plate storage box

- 1 Use a soft, lint-free cloth dampened with cold tap water to clean the surfaces of the box.
- 2 Use a Planmeca approved disinfectant wipe to disinfect the surfaces.
- 3 Alternatively, the imaging plate storage tray can be treated in a thermal disinfectant or steam steriliser. If a thermal disinfectant or steam steriliser is used, *do not* exceed the temperature of 134 °C (273 °F).



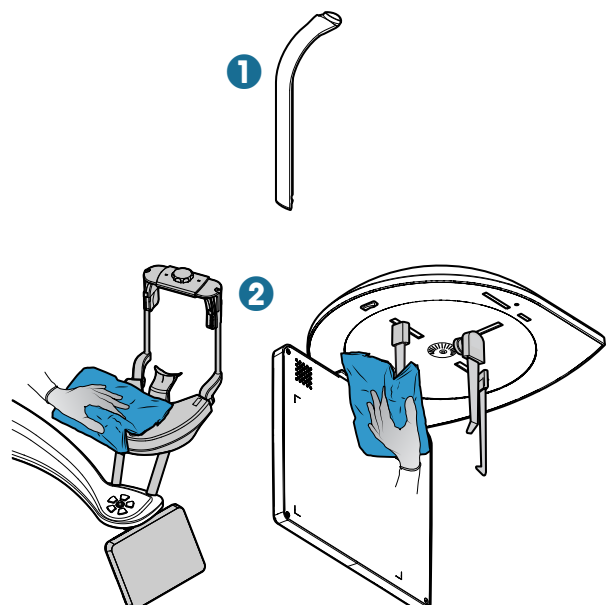
Planmeca ProMax® and Planmeca Viso™ extraoral X-ray units

- 1 Wear protective gloves.
- 2 Switch off the X-ray unit before cleaning and disinfection.
- 3 *Do not* apply sprays, liquids or foams directly onto any surface – use a clean, damp cloth instead.



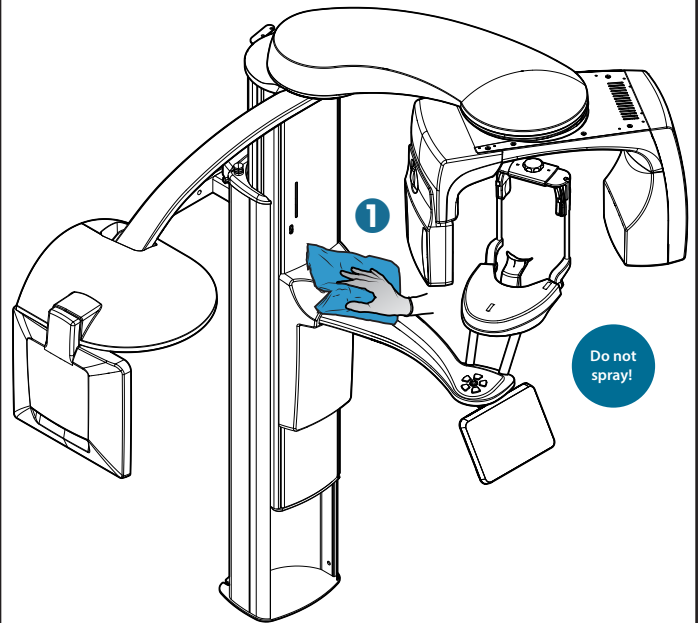
X-ray unit patient supports, handles and touch screens

- 1 Change the bite piece to a clean one after each patient or use a disposable protective shield.
- 2 Wipe all the parts **after each patient** using a surface disinfectant approved by Planmeca.
- 3 For stains and other impurities, use a Planmeca approved cleaning agent when needed.
- 4 Some support parts can be autoclaved at 134°C (273°F): a 3–4 minute cycle for porous loads and instruments – see further details in the user's manual.



Other surfaces of X-ray units

- 1 Wipe parts **regularly** using a surface disinfectant approved by Planmeca.
- 2 For stains and other impurities, use a Planmeca approved cleaning agent when needed.



For detailed instructions, please see the user's manual. For details about Planmeca approved disinfectants, please see Planmeca imaging units approved disinfectants guide.

Copyright Planmeca. Rights for changes reserved.